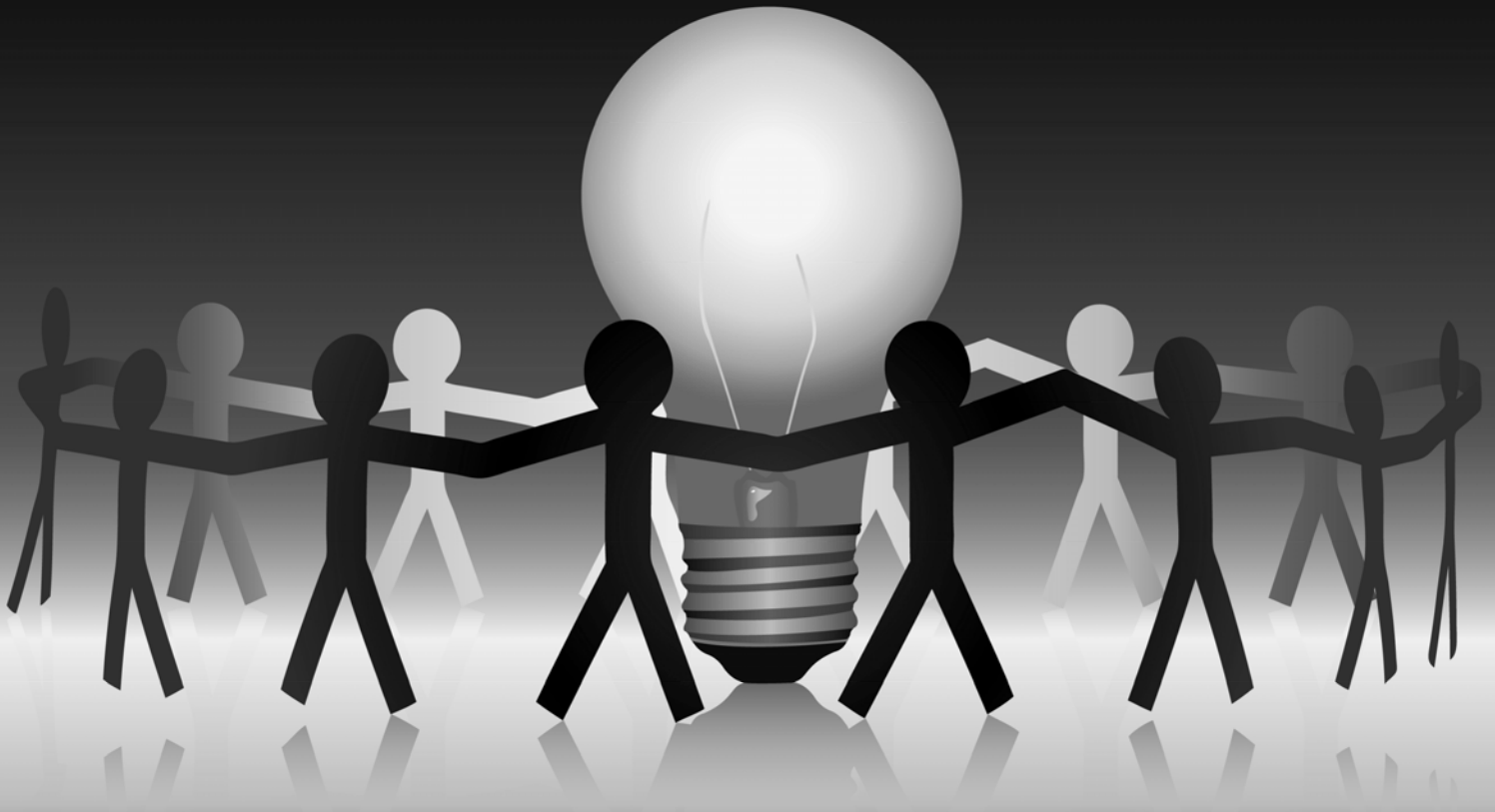


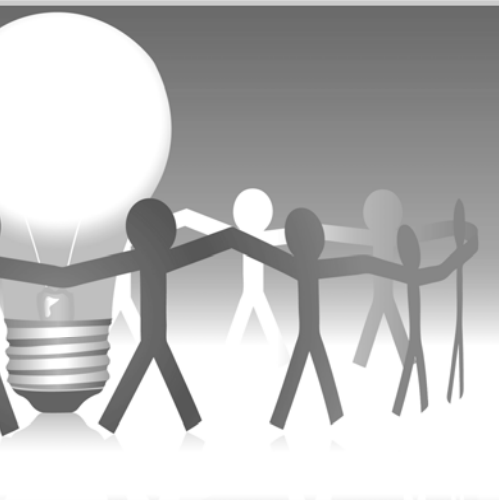
# The Power of Community Grants

A Community Foundation Grantmaking Report



Truman Heartland  
**COMMUNITY  
FOUNDATION**

Private Giving—Public Good



## Inside this issue: Continued...

THCF Celebrating National Philanthropy Month	3
Community Grants Program	4
Unrestricted Grants: The Community Grants Story	5
2008 Community Grants Recipients	6-9
2008 CEO Discretionary Grants Recipients	10
Restricted Grants: Donor-Advised Funds	11-14
Restricted Grants: Designated/Agency Funds	15
Restricted Grants: Field of Interest/Scholarship Funds	16-21

## Celebrating National Philanthropy Month

November is National Philanthropy Month, a month dedicated to recognizing the many contributions to philanthropy throughout the nation, as well as those individuals who are active in giving to improve area communities by promoting private giving for the public good.

With more than 1 million charitable organizations in the United States alone, in 2007 Americans gave nearly \$295 billion to charitable causes as reported by Giving USA.

National Philanthropy Month provides the opportunity for us to reflect and show appreciation for all that has been accomplished in the name of giving, as well as all that has yet to be accomplished. It's our chance to step into the spotlight for a brief moment and remind our communities, our society and our world that the spirit of giving is alive and well.

Since November 2007, Truman Heartland Community Foundation donors have given more than **\$6,315,359** to charitable organizations in our region! Today, we celebrate their contributions, and proudly award approximately **\$136,000 more** to area charities throughout our communities.

We also honor those Outstanding Citizens from our communities who dedicate time, talent and resources to making lives better for area residents:

**Dr. Mark & Cheryl Mozer**

*City of Blue Springs*

**Mary Strack**

*City of Grain Valley*

**School Transition Team:**

**Senator Victor Callahan, Dr. Jim**

**Hinson, Steve Mauer & Rev.**

**Bob Spradling**

*City of Independence*

**Rev. John Modest Miles**

*City of Kansas City*

**David Claycomb**

*City of Lake Winnebago*

**Geneva High**

*City of Lee's Summit*

**Norby Corn**

*City of Oak Grove*

**Mike Apprill**

*City of Raytown*

**Robert & Jake Welch**

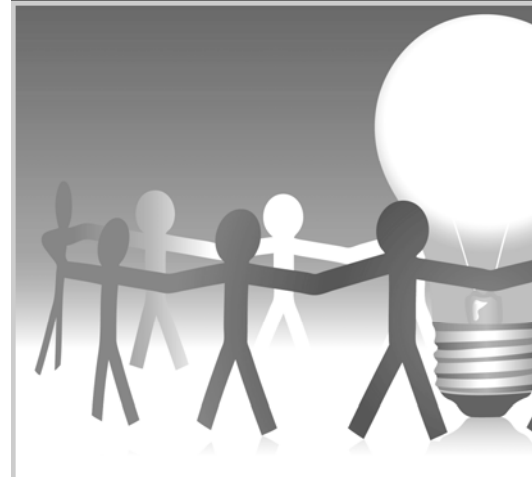
*City of Sugar Creek*

**MeraVic**

*Corporate Citizen*

**Larry Moore**

*Heartland Humanitarian*

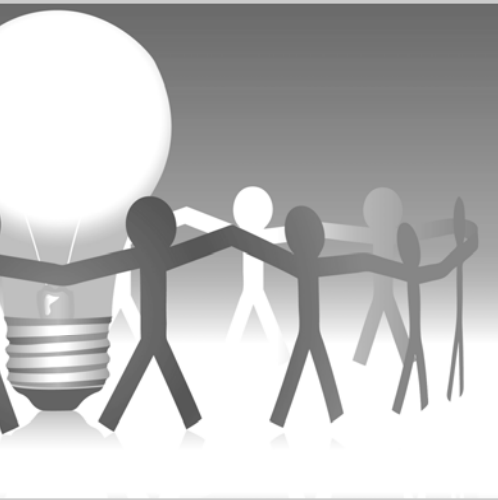


---

# Community Grants Program

*Sponsored by Randall Ferguson*

Sheraton Sports Complex Hotel  
Friday, November 7th, 2008  
11:30-1:00pm



## Call to Order

Paul Thomson, *President & CEO*

## Welcome & Board Introductions

Allen Lefko, *Chairman of the Board*

## Luncheon Menu

- Spinach Salad with Toasted Pecans and Strawberries
- Shanghai Beef—Sliced Beef tossed with Asian Vegetables
- Ginger/Sesame Sauce atop Soba Noodles
- Turtle Cheesecake
- Starbucks Coffee

## Introductions & A Few Stories

Paul Thomson, *President & CEO*

## Presentation of 2008 Community Grant Recipients

Randall Ferguson, *Grants Committee Chairman*

## Closing Remarks

Paul Thomson, *President & CEO*

## Adjournment

## UNRESTRICTED GRANTS: The Community Grants Story

The Community Foundation's Community Grants Program was first created in 1994 by heartland donors who wanted to fund future needs of our region. Not knowing what the future might hold, these donors established Unrestricted Funds with estate gifts and charged the Community Foundation's Board of Directors with making grants of impact to address priorities throughout the regions we serve.

To fulfill these requests, the Community Foundation hosts Needs Assessments in each of its communities to determine various priorities for our region. The Community Foundation then invites area nonprofits to submit requests for funding and selects those who demonstrate the greatest ability to satisfy the priorities of our communities as well as those who demonstrate the highest-level of professional practice.

### 2008 grants are awarded on behalf of the following Unrestricted Funds:

Dorothy D. Bay Endowment

Marjorie Pollard Hospice Endowment

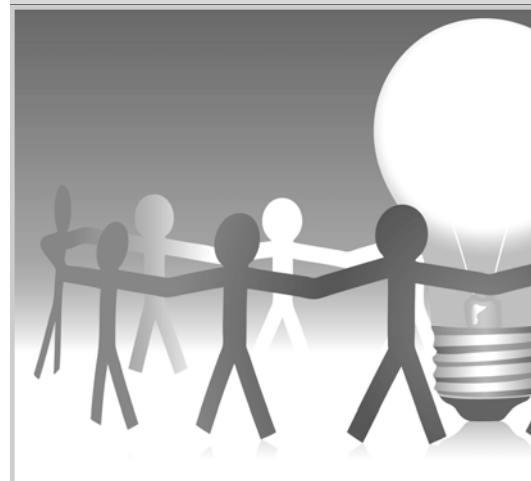
Heartland Arts Alliance Endowment

IRHC Community Services Endowment

THCF Health Endowment

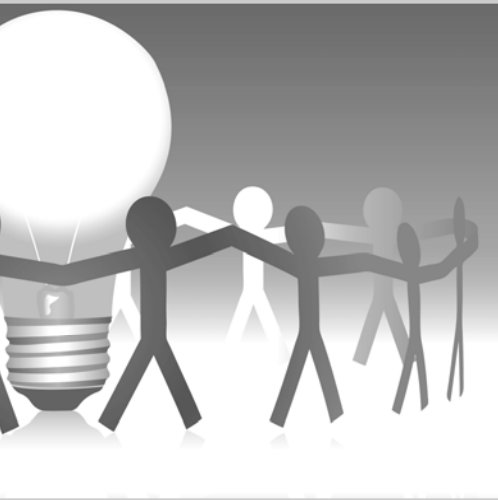
THCF Unrestricted Endowment

Youth Advisory Council Endowment



# 2008 COMMUNITY GRANTS RECIPIENTS

## Awards Totaling \$114,600



### Arts & Humanities - \$9,500

**Heritage Philharmonic**      *"December 13, 2008 Concert"*      **\$1500.00**  
Support for holiday concert at Blue Springs HS Performing Arts Center, presented by the Philharmonic (formerly Independence Symphony) programmed for children of all ages. Area high school and middle school choirs will be featured in the concert. The organization focus and mission is to promote and increase the musical knowledge and appreciation of the public.

**KACICO Dance**      *"Song and Dance Project 2009"*      **\$3000.00**  
Funding for 3 Free to the Public, live music and contemporary dance performances in Suburban Jackson County. Performances are in collaboration with KC area singers/songwriters. Appearing in public venues is a way to get more diverse audiences interested in and seeing contemporary dance. A youth education component precedes each performance.

**Kansas City Repertory Theatre**      *"Rep on the Road"*      **\$2500.00**  
Week long residency program at Raytown, Raytown South and Wm. Chrisman. Teachers choose from Shakespeare in the Wings, the American Masterworks Project and Curtain Up workshops. Rep teaching artists lead students thru study, auditions, rehearsals and presentation. Report from 2007 indicated 463 students participated with a similar number anticipated in 2008.

**Kansas City Symphony**      *"Handel's Messiah - November 2008"*      **\$2500.00**  
Funding to assist with presentation of KC Symphony performance at the Community of Christ Auditorium on Nov. 22, 2008. Performance is in collaboration with the Indep. Messiah Choir, an inter-denominational community choir, conducted by Dr. Arnold Epley. The Symphony's determined effort to preserve this traditional performance has maintained access to the event and resulted in improved artistic quality.

### Community Action - \$2,155

**Raytown Tree Board**      *"Walking Arboretum"*      **\$2155.00**  
Funding to assist with the purchase of 20 trees to create a walking arboretum in Henry C. Krister City Park. The arboretum will consist of 33 different tree species each given a permanent sign with description, thus becoming an educational resource for local school children and the general public. The Tree Board does not receive funding from the City of Raytown and can only finance projects through grants and donations.

### Education - \$36,175

**Big Brothers Big Sisters of GKC**      *"Program Expansion to SJC"*      **\$5050.00**  
*Youth Advisory Council Supported*

The BBBS is committed to making Suburban Jackson County a focus area of expansion. Funding will support operating costs related to assigning a case manager to work with a local steering committee in recruiting volunteer mentors for at risk children. There are 120 kids from single parent and non traditional homes currently on their waiting list.

**Blue Springs School District**      *"Creative Cats Company"*      **\$4050.00**  
*Youth Advisory Council Supported*

Creative Cats is a transition class that offers students with disabilities the opportunity to learn and practice critical job skills they need to advance to the next level of employment training. Funding will be used to purchase supplies that will enable the class to expand the types of products they produce and market to include candles and greeting cards.

**Council on Philanthropy**      *"Young Nonprofit Professionals Network of KC"*      **\$1500.00**

Funding support for the 2008/2009 program offered to area nonprofit professionals. Program expenses include food for five educational seminars, ten monthly networking events and two mentoring program kick-off events. Funds will also be used to purchase promotional items to increase and maintain involvement and participation at these events.

## 2008 COMMUNITY GRANTS RECIPIENTS (continued)

**Graceland University**    *"Human Patient Simulator (HPS)"*    **\$7000.00**

Partial funding to purchase an anatomically realistic manikin to provide nursing students virtual hands on experience, test students' clinical skills and decision-making ability without compromising patient safety. The increased number of nursing programs in KC has made it more difficult to obtain hospital experiences for students. HPS will also be an aid in recruiting new students to Graceland.

**H.S.T. Library Institute**    *"School House to the White House Special Exhibit"*    **\$5075.00**  
*Youth Advisory Council Supported*

Grant to support a new special traveling exhibition to the Truman Library from Feb. 2009 thru Sept. 2009. The exhibit charts the educational experiences of our Presidents from Herbert Hoover to William J. Clinton and includes several items from President George W. Bush's childhood. Special scholarship funds are being sought in an effort to increase the number of student (K-12) visitors.

**Metropolitan Org. to Counter Sexual Assault**    *"Project Aware"*    **\$5000.00**

Operational support for a sexual abuse prevention education program for pre-school through 5th grade students. The majority being offered in Independence, Blue Springs, Lee's Summit, and Raytown. One hour class periods utilize videos and coloring books (age appropriate) along with discussion and role play. MOCSA will also offer presentations with school personnel and parent groups dealing with abuse disclosures and reporting policies

**St. Matthew's Episcopal Church**    *"Adult ESL Program"*    **\$6000.00**

Funding to purchase curriculum materials and supplies for weekly program of English instruction for 50-75 adults. Classes are offered free of charge two evenings per week (September – May) with no religious content or persuasion, free child care is also provided. In the absence of any such program within 14 miles, a goal of the program is to empower residents to achieve full integration in the community through master of the English language.

**Women's Employment Network**    *"Dimensions Program"*    **\$2500.00**

Operational support for program that provides job readiness/employment preparedness services to women, age 18 who are unemployed, in career transition, or returning to the workforce. Approximately 30% of clients graduating from this program live in Suburban Jackson County.

### Health & Welfare - \$66,770

**Budget & Financial Management Assistance**    *"Rent Rebate Program for SJC"*    **\$2200.00**

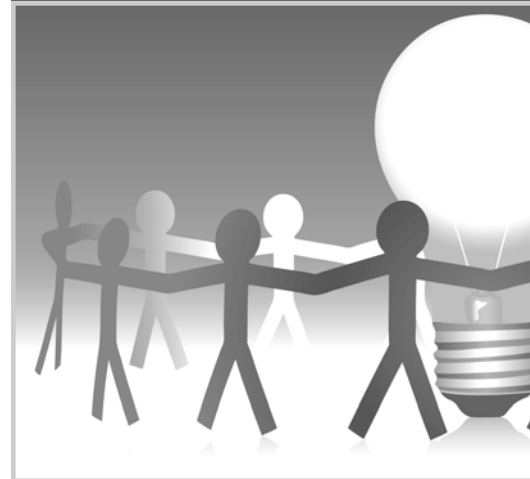
Program support for organization that serves 700 disabled and/or elderly clients by acting as a representative payee. Funding will allow organization to offer rent rebate program assistance to approximately 110 Suburban Jackson County residents. This investment of approximately \$20 per client will yield an average return of \$400.

**Child Abuse Prevention Association (CAPA)**    *"Operational Support"*    **\$3225.00**  
*Youth Advisory Council Supported*

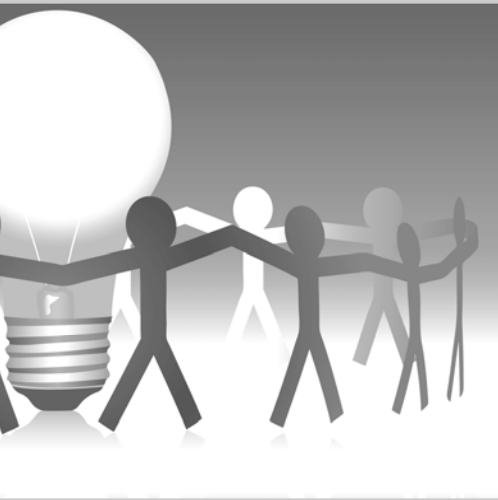
Operational support for child abuse prevention programs including: Counseling - therapy for victims as well as prevention; Family Support Services - in-home based services for families with newborns and high-needs families to prevent abuse; and Education - parenting, child safety and community classes. In 2007 all three program areas served 11,067 persons, this funding will increase stability and help ensure continued services to the community.

**Community Mediation Center**    *"Life Skills Training for At-Risk Youth"*    **\$2500.00**

New initiative funding for expansion of former Anger Management program to Life Skills Training that includes conflict resolution and positive relationship building skills training in the Independence and Ft. Osage School Districts. Program includes in school sessions as well as in home sessions with families.



## 2008 COMMUNITY GRANTS RECIPIENTS (continued)



**Community Services League**      *"Communications Plan"*      **\$4000.00**

Based on research conducted, CSL requested funding to implement a strategic marketing initiative that would strive to eliminate the lack of understanding about CSL services; improve image; increase financial and volunteer support. This one-time funding will be used for expenses relating to graphics and print materials.

**Developing Potential, Inc.**      *"Accessibility Project"*      **\$3727.00**

Funding to purchase curriculum, assistive and sensory items for 52 adults with developmental disabilities. Devices will allow clients to become more independent in areas of eating, self-care, computer use, and social skills.

**Grain Valley Assistance Council**      *"Home Delivered Meals"*      **\$1950.00**

Operational support for organization that has provided home delivered meals in Grain Valley since 1997. Funding will assist with cost of meals delivered by volunteer drivers to approximately 15 homebound senior and/or disabled residents Monday through Friday. The clients only pay part of the cost of the meal and as demand for services increases so does the need for additional funding.

**Helping Hands Therapeutic Riding Ctr**      *"Equine Mobile Outreach Program"*      **\$2500.00**

Initiative funding to implement new program using a mechanical horse, Equicizer, to a wider segment of the community. Organization will use unit to bring awareness about the therapeutic riding industry. The Equicizer will also provide a safe alternative solution for timid clients and allows the therapist to work with clients when it's too cold, hot or stormy for a living horse.

**Hillcrest Ministries, Inc.**      *"Transitional Housing Program Appliances"*      **\$6000.00**

Funding to assist with the purchase of refrigerators and laundry facility appliances at the 13 new apartments in Lee's Summit. 39 families (an estimated 117 individuals) will be housed cost free in a stable nurturing environment while they attend life-skill classes, connect with community resources and strive for self-sufficiency.

**Hope House, Inc.**      *"Building Hope Campaign"*      **\$7718.00**

Funding to upgrade washers and dryers at the Independence shelter, to commercial grade. New appliances will better withstand the natural wear and tear of heavy use. 52 women and children share three washing machines and three clothes dryers which amounts to 50 loads of laundry run through each washer and dryer each week.

**Lee's Summit Meals on Wheels**      *"Insulated Delivery Trays"*      **\$2450.00**

Funding to replace 65 broken liners @ \$17.50 that fit into 3-piece meal delivery system. This volunteer organization has been in existence over 30 years and currently delivers meals to approx. 75 Lee's Summit elderly and/or handicapped citizens per day, 5 days per week. This is a first-time grant to this organization.

**Marian Hope Center for Children's Therapy**      *"Feeding Support Group"*      **\$3100.00**  
*Youth Advisory Council Supported*

A large number of children with Autism, Down Syndrome and Cerebral Palsy as well as those born severely premature have feeding deficits. Marian Hope Center offers 5 feeding groups each week with 3-4 children in each group. This funding will be used to purchase various items associated with feeding and swallowing issues, including oral and sensory supplies, positioning and adaptive equipment. Equipment will be loaned to the parents in order for carryover to take place in all environments.

**Mother's Refuge**      *"Healthy Lifestyles for Pregnant Teens and Babies"*      **\$2500.00**  
*Youth Advisory Council Supported*

Funding to purchase a 25.6 cubic foot side by side refrigerator to replace 20 year old appliance and a 24.7 cubic foot upright freezer to replace one that is broken. These new appliances will help Mother's Refuge meet a requirement of a "Healthy Lifestyle" grant received from the Health Care Fdn. of KC to teach proper nutrition, provide healthy meals and provide exercise classes for residents.

## 2008 COMMUNITY GRANTS RECIPIENTS (continued)

**Rainbow Center**                      *"Electronic Hoyer Lifts"*                      **\$7000.00**  
Funding to assist with the purchase of 4 lifts to enable staff to comfortably lift clients and students and alleviate potential physical exertion on the individual with special needs as well as the staff. The lifts would primarily be used in the adult day habilitation program which has expanded to 51 adults.

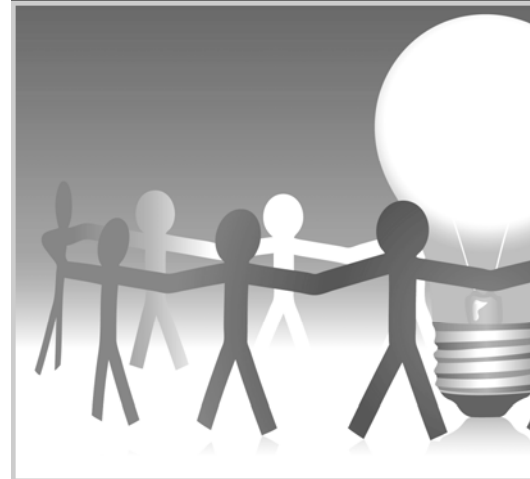
**ReDiscover**                      *"LS Elementary Prevention Program"*                      **\$3000.00**  
3rd and final year of support to fund a Prevention Specialist at Lee's Summit Elementary that serves 139 children. Direct prevention services include: working with children on problem solving and social skills activities; self-esteem building interactions and direct counseling; meeting with teachers and parents for specific child consultation. Expectations of program are to improve academic performance, attendance, completion of tasks, decrease stigma about mental illness and decrease number of suspensions.

**Special Neighbors, Inc.**                      *"Exercise Equipment"*                      **\$2400.00**  
Funding to purchase new exercise equipment for 20 disabled residents living at Carriage House (western Indep.); Manor House (eastern Indep.) and Nolen Manor (Grain Valley). Residents participate in a variety of organized sports through Special Olympics however this new equipment will help staff to promote healthy lifestyles and need for routine exercise. Equipment will include stationary bikes, treadmills, abdominal machines and elliptical trainer.

**St. Mary's Medical Center Foundation**                      *"Palliative Care Program"*                      **\$5000.00**  
Initiative funding to subsidize salary of an Advanced Practice Nurse who will lead the PCP team already in place at St. Mary's Hospital. The hospital will cover most of the program costs but is seeking outside support because of the community benefit it brings to Suburban Jackson County. Patients served are those that are near death or those that no longer have hope for effective cure.

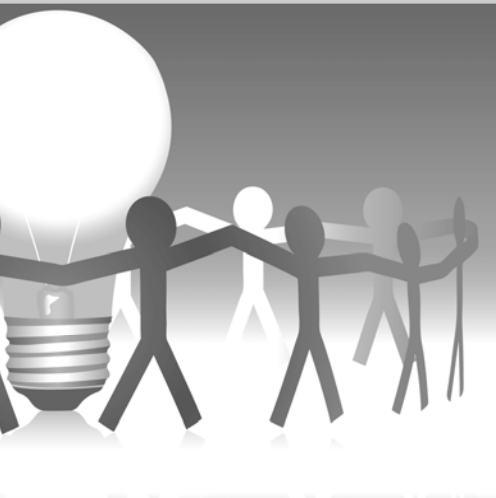
**The Family Conservancy**                      *"Student Assistance Program"*                      **\$5000.00**  
Operational support for program that provides regular, ongoing therapeutic case management, mentoring and financial assistance to students who no longer live with or are supported by their parents. Offered locally at Chrisman, Truman, Hickman Mills and Ruskin, the program supports academic success by providing both emotional and financial support to at-risk teens in order to maintain regular attendance and performance as well as acceptable living arrangements.

**TNC Community**                      *"Furnishings for New Group Home"*                      **\$2500.00**  
Funding assistance to purchase kitchen appliances, and furniture for living room and dining room for new group home in Independence for clients with developmental disabilities. New home will house 6 individuals bringing the total number served in Suburban Jackson County to 12. All 12 of these individuals will be indigent adults diagnosed with severe to profound mental retardation.



## 2008 CEO DISCRETIONARY GRANTS

### Awards Totaling \$21,398.59

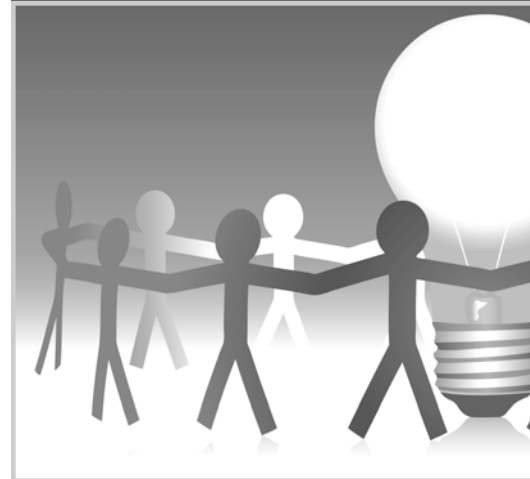


<u>Organization</u>	<u>Program</u>
ALS-Worthington Chapter	<i>ALS Walk</i>
American Council on Gift Annuities	<i>Terry L. Simmons memorial</i>
American Heart Association	<i>Infant CPR Anytime program</i>
City of Lee's Summit	<i>21<sup>st</sup> Century Strategic Planning</i>
Civil War Round Table of West. MO	<i>Civil War Markers</i>
Community Services League	<i>I Share - Utility Assistance</i>
Community Services League	<i>Event Support</i>
Cultural Arts Coalition	<i>Annual Showcase of "Art" Sponsor</i>
Friends of Powell Gardens	<i>Event Support</i>
Friends United	<i>Event Support</i>
Gift of Life	<i>Event Support</i>
Grandma's Alzheimer Fund	<i>Event Support</i>
Hope House, Inc.	<i>Event Support</i>
IBS Industries, Inc.	<i>Support for Washington DC trip</i>
Independence School Dist. Foundation	<i>FIRST BOTS of Independence</i>
Independence School Dist. Foundation	<i>Extreme School Makeover Project</i>
Independence School Dist. Foundation	<i>Jordan Starling Memorial Event</i>
Institute for International Medicine	<i>Volunteer Recognition/Dr. James Elias</i>
JSL Capital Campaign Fund	<i>Event Support</i>
KC Chapter of SPEBSQSA	<i>Event Support</i>
Lee's Summit Foundation Fund	<i>Program Support</i>
Local Investment Commission	<i>Independence Heritage Festival</i>
MCC Foundation	<i>Longview Art &amp; World Music Festival</i>
Mercy In Action International	<i>Program Support</i>
NWCDC	<i>Event Support</i>
PAWS	<i>Pets 'N'All that Jazz</i>
Quality Hill Playhouse	<i>2008 Gala Entertainment</i>
Rainbow Center	<i>Event Support</i>
Salvation Army	<i>Crossroads Event Support</i>
Sunshine Center	<i>Event Support</i>

# RESTRICTED GRANTS

## Donor-Advised Funds Totaling \$309,892.89

<b><i>THCF General Operating Fund</i></b>	<b><i>1,080.00</i></b>
JSL Capital Campaign Mayor's Prayer Breakfast Fund	
<b><i>John William Parmerlee Fund</i></b>	<b><i>2,000.00</i></b>
Soccer West	
<b><i>C. Robert Buckley Family Fund</i></b>	<b><i>5,000.00</i></b>
Bears Tomorrow, Inc. School District of Independence Foundation	
<b><i>Gene and Joanne Cable Donor-Advised Fund</i></b>	<b><i>9,250.00</i></b>
Drumm Farm Foundation THCF General Operating Fund Kansas City Symphony Music-Arts Institute Nelson Gallery Foundation Powell Gardens The Salvation Army School District of Independence Foundation	
<b><i>Tom Cairns Donor-Advised Fund</i></b>	<b><i>2,000.00</i></b>
Music-Arts Institute St. Mary's Diocesan High School	
<b><i>Cavanah Family Fund</i></b>	<b><i>3,000.00</i></b>
Drumm Farm Foundation	
<b><i>Centerpoint Medical Staff Community Grants Fund</i></b>	<b><i>35,000.00</i></b>
Child Abuse Prevention Association Community Services League Crossroads – Salvation Army Drumm Farm Foundation Jackson County Free Health Clinic The Smile Train	
<b><i>Roberta Coker Charitable Fund</i></b>	<b><i>1,758.00</i></b>
Friends of Powell Gardens THCF General Operating Fund Junior Service League of Independence Quality Hill Playhouse Christmas Concert Fund	
<b><i>Byron Constance Fund</i></b>	<b><i>500.00</i></b>
YMCA of Greater Kansas City – Independence	
<b><i>D &amp; S VP Charitable Fund</i></b>	<b><i>7,000.00</i></b>
Harvesters The Salvation Army Truman Medical Center Lakewood Truman Medical Center Wayside Waifs, Inc.	
<b><i>Samuel W. Edmunds Charitable Fund</i></b>	<b><i>59,047.00</i></b>
Drumm Farm Foundation Helping Hands Therapeutic Riding Center Hillcrest Ministries Jackson County Free Health Clinic Kansas City Hospice School District of Independence Foundation Sunshine Center Capital Campaign Fund Sunshine Center, Inc.	
<b><i>Elias Family Charitable Fund</i></b>	<b><i>2,000.00</i></b>
Heart of America Council/Boy Scouts of America Dramatic Truth Ministries	
<b><i>The Foudree Family Donor-Advised Fund</i></b>	<b><i>18,520.00</i></b>
Art of Medicine Fund THCF General Operating Fund Harry S. Truman Library Institute Hope House, Inc. Rainbow Center School District of Independence Foundation St. Mary's Hospital of Blue Springs Foundation St. Paul School of Theology Stand Up Blue Springs Truman State University	





## RESTRICTED GRANTS Donor-Advised Funds *(continued)*

<i>The Robert E. &amp; Debra A. Harmon Fund</i>	<i>10,000.00</i>
Blue Springs Christian Church	
<i>Harold and Mary Ellen Hall Fund</i>	<i>11,955.00</i>
St. John's United Methodist Church	
American Red Cross, GKC Chapter	
City Union Mission	
KCPT Public Television 19	
Lee's Summit Symphony Orchestra	
Northwest Missouri State University	
Raytown Emergency Assistance Program	
The Salvation Army	
YMCA Richard C. Greene Senior Center	
<i>Hammer Family Fund</i>	<i>500.00</i>
Great Commission Latin America, Inc.	
<i>Douglas G. and Helen Ann Hatridge Family</i>	<i>50.00</i>
Starlight Theatre	
<i>Gene and Mary Haug Family Foundation</i>	<i>1,000.00</i>
PISCES Scholarship Fund	
<i>Dr. Herman Hausheer Family Fund</i>	<i>100.00</i>
School District of Independence Foundation	
<i>Heggestad Family Fund</i>	<i>13,000.00</i>
Bishop Sullivan Center	
Doctors Without Borders	
Harvesters	
Heart to Heart International	
National Catholic Reporter	
Water Partners International	
Women for Women International	
<i>Higgins Family Fund</i>	<i>3,250.00</i>
Children's Health Education Center	
Children's Hospital of Wisconsin	
Cornell University Foundation	
Hartland Food Pantry	
The Heifer Project International	
Kitchen Angels	
Lake Country Caring, Inc.	
One Laptop Per Child Association, Inc.	
St. Mary Catholic Faith Community	
St. Mary Church	
Wheelchair Foundation	
Window to the World Communications	
<i>Horn Law Firm Foundation Fund</i>	<i>1,500.00</i>
Lutheran High School Kansas City	
<i>Hurt Family Fund</i>	<i>8,979.00</i>
Della Lamb Community Center	
St. Paul United Methodist Church	
<i>John W. and Nancy C. Kimak Donor Advised</i>	<i>11,085.00</i>
Friends of Sugar Creek Endow. Fund	
THCF General Operating Fund	
Grandma's Alzheimer Fund	
Hillcrest Ministries, Inc.	
Holy Trinity Orthodox Church	
Michael Brown Mem. Schol. Fund	
Noland Road Baptist Church	
Palmer Center Senior Services Enhancement Fund	
St. Mary Catholic Church	
St. Vincent dePaul Society	
<i>Margaret Kimak Donor Advised Fund</i>	<i>13,000.00</i>
Friends of Sugar Creek Endow. Fund	
Hillcrest Ministries, Inc.	
School District of Independence Foundation	
<i>King Family Fund</i>	<i>6,150.00</i>
Drumm Farm Foundation	
Unicorn Theatre	
<i>Lamb Family Fund</i>	<i>300.00</i>
Nativity of Mary Church	

# RESTRICTED GRANTS

## Donor-Advised Funds *(continued)*

***Lefko Family Foundation Fund*** **2,200.00**

Heart of America Council/Boy Scouts of America  
School District of Independence Foundation

***Henks Financial Group Charitable Fund*** **1,000.00**

Heritage Philharmonic

***Independence Young Matrons Endowment Fund*** **1,600.00**

Cancer Action Fund  
Jackson County Free Health Clinic

***McClure Family Fund*** **5,521.00**

Am. Lebanese Syrian Assoc. Charities	KCPT Public Television 19
Citizens Civic and Cultural Committee	Messiah Lutheran Church
Drumm Farm Institute	Midwest Section PGA Foundation
Grandma's Alzheimer Fund	School District of Independence Foundation
Harry S. Truman Library Institute	Uplift Organization
Junior Service League of Independence	

***Mitzvah Fund*** **2,800.00**

Florence- Melton Adult Mini School  
Jackson County Free Health Clinic

***John Olivarez Family Fund*** **750.00**

University of Missouri – Columbia  
Partnerships in Education

***Peterson Salvation Army Fund*** **185.00**

The Salvation Army

***Pryde Family Foundation Fund*** **250.00**

School District of Independence Foundation

***Joan and Max Raveill Charitable Fund*** **5,990.00**

Action on Smoking and Health	National Parks Conservation Association
Colonial Williamsburg Foundation	Nelson Gallery Foundation
Community of Christ	Paralyzed Veterans of America
Disabled American Veterans	Powell Gardens
Friends of the Zoo, Inc. of Kansas City	United Service Organizations, Inc.
KCPT Public Television 19	United States Olympic Committee
Mother's Against Drunk Driving	

***Ed & Sue Russell Family Foundation Fund*** **500.00**

First Baptist Church of Independence

***Richard E. Sanderson Scouts in Need Fund*** **1,310.00**

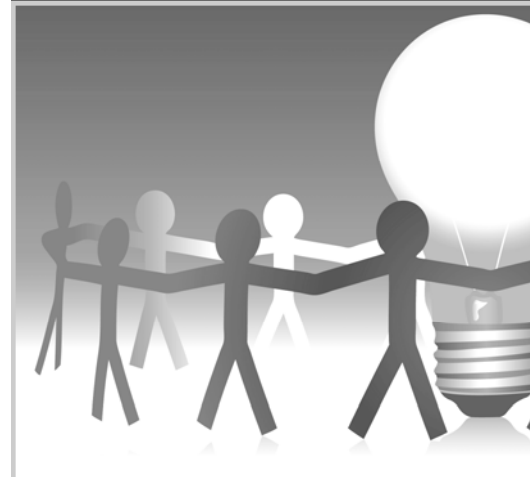
Faith United Methodist Church  
Heart of America Council/Boy Scouts of America

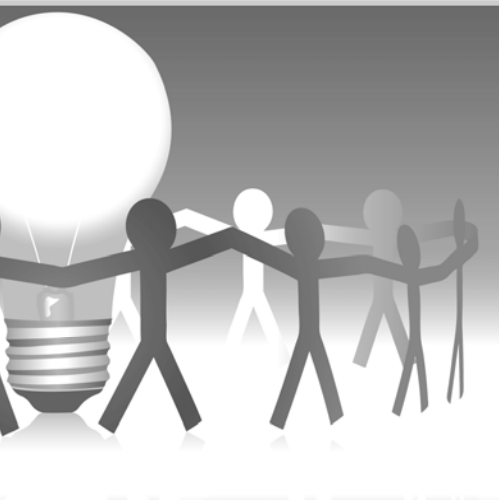
***Schondelmeyer-Williams Fund*** **3,850.00**

First Christian Church	Midwest Genealogy Center Fund
Jackson County Historical Society	Palestine Missionary Baptist Church

***Dennis and Jane Taylor Fund*** **5,135.00**

First Presbyterian Church	Metro Org. for Racial and Economic Equity, Inc.
THCF General Operating Fund	Northeast High School Alumni Association
Harry S. Truman Library Institute	Puppetry Arts Institute
I Share	School District of Independence Foundation





## RESTRICTED GRANTS Donor-Advised Funds *(continued)*

*McCandless/Taylor Fund* *6,000.00*  
Nativity of Mary Church

*Paul and Marilyn Thomson Family Fund* *5,700.00*  
 First Hand Foundation  
 Heart of America/Boy Scouts of America  
 Indep. Community Christmas Concert  
 Lee's Summit Charitable Foundation  
 Mid-Continent Public Library  
 Midwest Genealogy Center Fund  
 Noland Road Baptist Church  
 Palestine Missionary Baptist Church  
 Powell Gardens  
 School District of Independence Foundation

*Daniel E & Alice D Waite Family Foundation* *2,400.00*  
 Graceland University  
 Mayo Clinic  
 School District of Indep. Foundation  
 Truman Medical Center Foundation  
 University of Iowa Foundation  
 University of Minnesota

*Widick and Appleberry Family Fund* *750.00*  
 Lee's Summit Charitable Foundation Fund  
 School District of Independence Foundation

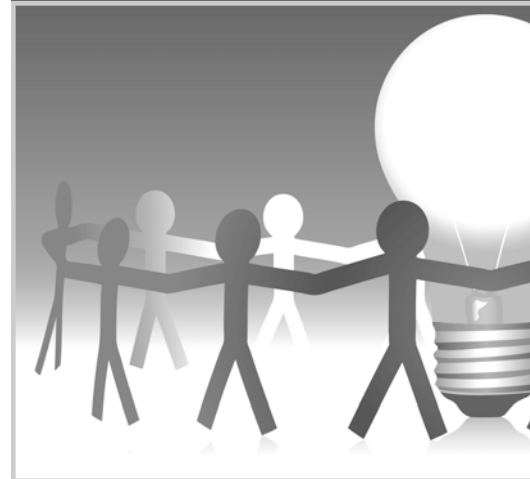
*Dave & Shirley Wurth Family Foundation* *29,150.00*  
 ALS – Keith Worthington Chapter  
 Campus Crusade for Christ  
 Fellowship of Christian Athletes  
 Friends of Raytown Parks Fund  
 THCF General Operating Fund  
 Heartland Presbyterian Center  
 Raytown Educational Foundation Fund  
 Rotary Foundation  
 Theta Chi Funds for Leadership & Education  
 Williams Educational Fund

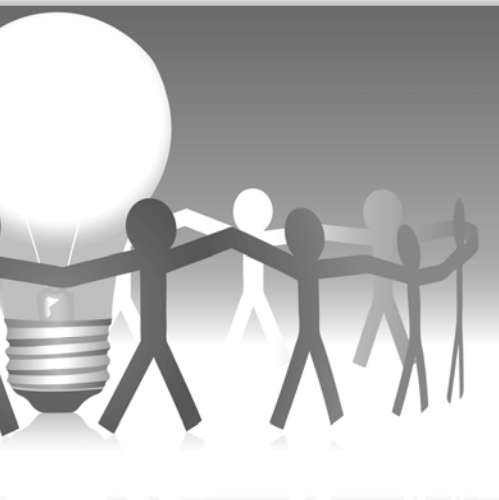
## RESTRICTED GRANTS

### Designated/Agency Funds Totaling \$5,414,958

The following nonprofits have partnered with THCF by establishing Organization Funds for the purpose of increasing support for their charitable missions. Grants from these funds were made to support capital campaigns, operations and special programs.

*Association of Fundraising Professionals*  
*Belton Educational Foundation*  
*Dragon Gymnastics, Inc. Capital Campaign*  
*Bridge Builders Senior & Disability Services Fund*  
*Community Association for the Arts*  
*Child Abuse Prevention Association*  
*Cass County Historical Society*  
*Cass County Genealogical Society*  
*Statue of Liberty Restoration Fund*  
*Community Mediation Center, Inc.*  
*Community Services League*  
*Drumm Farm Educational Fund*  
*Blue Springs School of Economics*  
*Jackson County 4-H Foundation*  
*Friends of Truman Depot Fund*  
*Friends of Sugar Creek*  
*Gift of Life*  
*Grain Valley School District Foundation*  
*Helping Hands Therapeutic Riding Center*  
*Hillcrest Ministries*  
*Hope House*  
*Hope House - M. E. Hurt Endowment*  
*Hope House- Mary Elizabeth Hope Fund*  
*Jackson County Historical Society - Roger T. Sermon Endowment*  
*The Forever Funds Endowment of Bi-CountyUnited Way*  
*Junior Service League*  
*Kansas City Chorale*  
*The Lighthouse*  
*First Presbyterian Church of Lee's Summit*  
*Lee's Summit Social Services*  
*Legacy Foundation*  
*Messiah Lutheran Church*  
*MO Park & Recreation*  
*PAWS*  
*Progress Independence*  
*Rachel House*  
*Raytown Educational Foundation*  
*ReDiscover Foundation*  
*Edna Scahill Endowment for Shepherd's Center of Raytown*  
*Senior Citizens' Trust Fund of Eastern Jackson County*  
*Youth Art Show Fund*  
*Puppetry Arts Institute*  
*Santa Fe Trail Neighborhood CDC*  
*Sugar Creek CDC*  
*Sunshine Center Fund*  
*Heritage Philharmonic*  
*Jeffrey Tognascioli Memorial for TNC*  
*Turning Point, The Center for Hope and Healing*  
*Vaile Victorian Society Endowment*





## RESTRICTED GRANTS

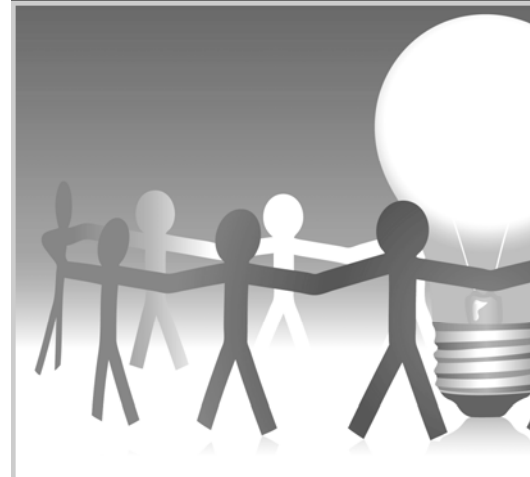
Field of Interest/Scholarship Funds Totaling \$385,879.51

<i>William M. and Martha L. Thomas Fund</i> New Salem Baptist Church	<i>5,380.91</i>
<i>City of Blue Springs Vesper Hall</i>	<i>2,500.00</i>
<i>Advocates for a Healthy Independence</i> Health Care Foundation of GKC	<i>314.40</i>
<i>City Beautification Commission Fund</i> City of Independence	<i>557.76</i>
<i>Charitable Reinvestment Foundation Fund</i> Downtown Lee's Summit Main Street Northwest CDC	<i>10,000.00</i>
<i>Civil War Historic Marker Fund</i> Civil War Round Table of Western MO	<i>600.00</i>
<i>Coalition For Child Safety Fund</i> Child Abuse Prevention Association Hope House, Inc. Mother's Outraged at Molesters Organization	<i>1,499.29</i>
<i>The Dictionary Project of Kansas City Fund</i> Reading Reaches, Inc.	<i>15,000.00</i>
<i>Jackson County Free Health Clinic Fund</i> Jackson County Health Department	<i>14,000.00</i>
<i>George W. Mansfield Junior Golf Foundation</i> Junior Golf Foundation of GKC	<i>750.00</i>
<i>Grain Valley Senior Citizen Nutrition Program Fund</i> Grain Valley R5 School District	<i>1,290.00</i>
<i>Raytown Rotary Fund</i> MIT/Nathan Peterson MU/Nicole Lacy	<i>2,000.00</i>
<i>Coalition for Child Safety Fund</i>	<i>8,194.88</i>
<i>Truman Institute for Inclusive Community</i> Palestine Missionary Baptist Church	<i>2,000.00</i>
<i>Truman Memorial Building Restoration Fund</i> City of Independence	<i>5,000.00</i>
<i>Melvin Jones Eye Fund</i> Lions Eye Fund	<i>2,500.00</i>
<i>THCF - Lee's Summit Charitable Fund</i> Special Project Fund for Lee's Summit Social Services	<i>12,133.00</i>
<i>Youth Advisory Council Fund</i> Raytown South High School	<i>350.00</i>

# RESTRICTED GRANTS

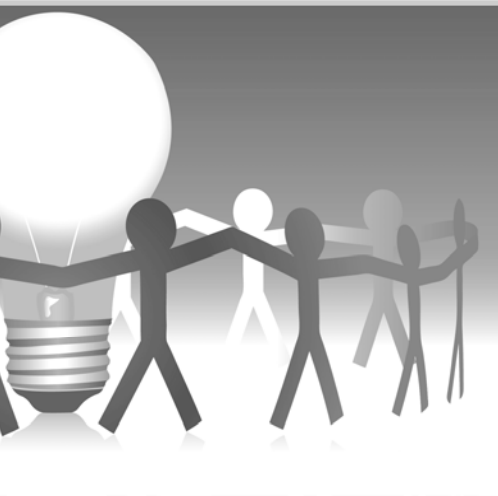
## Field of Interest/Scholarship Funds (*continued*)

<b><i>Aquila Scholarship Fund</i></b>		<b><i>32,000.00</i></b>
Blue River CC/Savanna Handley	MSU/Kelsey Leiber	
Drury Univ./Nicholas Banner	MSU/Brittnie German	
Lindenwood Univ./Ryan Herda	MSU/Sarah Hacker	
Mid-America Nazarene./Amber Johnson	MO Western/Megan Goodwin	
MO S&T/Caroline Wright	MO Western/Kaitlyn Mary Dye	
MO S&T/Joseph Koenig	North Central MO College/Kyla Payne	
MO Southern State/Tara Jean Nelson	Northwest MSU/Bailey Dawn Herbst	
MSU/Kayla Easton	Northwest MSU/Ashley Hillier	
Northwest MSU/Kelsey Ann Waibel	Northwest MSU/Kirsti LeAnn Miller	
Rockhurst Univ./John Christopher Seipel	SBU/Holland Bethany Windsor	
State Fair CC/Lacey Dulaban	MU/Quentin Stevenson	
MU/Michael Beissenherz	Univ. of Nebraska-Lincoln/Katie Clear	
MU/Amber Bunton	Washington Univ. in St. Louis/Helen Clawitter	
UMKC/Jerod Wyatt	Wilberforce Univ./Morgane Bruce	
UMKC/Cameron Bott	William Jewell/Kelli Flannery	
Univ. of Mobile/Jillian McCoy	William Jewell/Seth Alan Smith	
<b><i>Cpl. Benjamin Ashley Memorial Scholarship</i></b>		<b><i>500.00</i></b>
MU/Levi Daniel Franklin		
<b><i>Association for Industrial Development Endowment Fund</i></b>		<b><i>6,500.00</i></b>
Evangel Univ./Lindsey Davis	UMKC/Cameron Albin	
MU/Levi Daniel Franklin	UMKC/Steve Bodenheimer	
<b><i>Eastern Jackson County Bar Association Charitable Fund</i></b>		<b><i>1,000.00</i></b>
Evangel Univ./Lauren R. Gant		
<b><i>John S. Barrett Memorial Scholarship Fund</i></b>		<b><i>1,000.00</i></b>
MO Univ. of Science and Technology/Fawn Kostal		
<b><i>Sandy Hamilton Memorial Fund</i></b>		<b><i>500.00</i></b>
Belton School District Educational Foundation/Michael Tompkin		
<b><i>Sixth Bomb Group Memorial Education Fund</i></b>		<b><i>1,000.00</i></b>
Hope College/Evan Ormiston		
Univ. of Wisconsin-Madison/Samantha Barry		
<b><i>John Bowser Radiology Scholarship Fund</i></b>		<b><i>10,500.00</i></b>
Avila Univ./Marrissa Lindsey	Avila Univ./Brooke Henry	
Avila Univ./Gina Maturro		
<b><i>Steven D. Brown Scholarship Fund</i></b>		<b><i>1,000.00</i></b>
Pittsburg State Univ./Jacob Catloth		
<b><i>Ron Bruch Teacher of the Year Scholarship</i></b>		<b><i>500.00</i></b>
Cara Satterfield		
<b><i>Josh Borgmeyer Memorial Scholarship</i></b>		<b><i>261.00</i></b>
Longview Community College/Maggie Hadfield		
<b><i>Brianna Leigh Shelton Performing Arts Scholarship</i></b>		<b><i>1,000.00</i></b>
Graceland Univ./Jena Wight		
Oklahoma City Univ./Whitney Lee		
<b><i>Sara Garrett Memorial</i></b>		<b><i>1,000.00</i></b>
Northwest MSU/Megan Best		



## RESTRICTED GRANTS

### Field of Interest/Scholarship Funds (*continued*)



<i>Brandon Gieselman Memorial 4-H/FFA Scholarship</i>	<i>2,000.00</i>
Maple Woods/Bradley Storck MU/Heidi Varner	State Fair Community College/Megan Rooney William Jewell/Nicole Smith
<i>Brian Borgstadt Memorial Scholarship Fund</i>	<i>500.00</i>
MU/Michelle Leheney	
<i>Bartow Scholarship Investment Fund</i>	<i>3,000.00</i>
SBU/Wendell Fuimaono UCM/Erin Donohue	
<i>The Council of Clubs of GKC Scholarship</i>	<i>5,500.00</i>
UMKC/Cameron Dowlatshahi UMKC/Kara Miller UCM/Mondell Hampton KU/Arielle Martin KU/Ian Osler William Jewell/Sarah Jane Barlow	William Jewell/Jacob Lumby William Jewell/Jonathan Pierson William Jewell/Joy Mason William Jewell/Emily Hyder William Jewell/Krysten Waeckerle
<i>Kay Dunning Nursing Scholarship Fund</i>	<i>1,000.00</i>
Graceland Univ./Kristi Schultz Graceland Univ./Katie Cavanah	
<i><u>F.O.R.C.E.—Fort Osage Resources Champion Education:</u></i>	
<i>Fort Osage R-1 Scholarship Foundation General Fund</i>	<i>250.00</i>
Blue River Comm. College/Amanda Taylor	
<i>Harley &amp; Doris M. Eby Reed Scholarship</i>	<i>275.00</i>
MCC/Joseph Phillips	
<i>Daughters of the American Revolution</i>	<i>350.00</i>
Blue River Comm. College/Megan Bittiker DeVry Univ./Andrew Goehring	
<i>Dr. Ben Whited Scholarship Fund</i>	<i>300.00</i>
MU/Breanna Bennett	
<i>FOSD Leadership Fund</i>	<i>1,000.00</i>
Blue River CC/April Jackson Blue River CC/Amanda Taylor	UMKC/Justin Evans
<i>J. Richard Franklin Scholarship Fund</i>	<i>275.00</i>
MU/Melissa Slinkard	
<i>Robert Keeton Scholarship Fund</i>	<i>275.00</i>
Park Univ./Vincent Langkamp	
<i>Dr. Victor D. Gragg Scholarship Fund</i>	<i>275.00</i>
Blue River Comm. College/Ryan Payne	
<i>Arthur Butler Scholarship Fund</i>	<i>1,000.00</i>
Baker Univ./Rae Stewart MSU/Caleb Clawson	MU/Steven Shrout Park Univ./Vincent Langkamp
<i>Gragg Memorial Scholarship Fund</i>	<i>450.00</i>
Blue River CC/Alyssa Stock Park Univ./Zach Smith	William Woods Univ./Amanda Griffey
<i>Dustin Payne Scholarship Fund</i>	<i>350.00</i>
MO Southern State Univ./Brandon Dean	
<i>Melanie Meyer Memorial Scholarship Fund</i>	<i>2,000.00</i>
MO Southern State Univ./Bailey Beale	
<i>Carol Marcks Elementary Education Scholarship</i>	<i>250.00</i>
Blue River Comm. College/Kaylyn Brockmeyer	
<i>Judy Lee McDaniel-Yazel Scholarship Fund</i>	<i>525.00</i>
Bingham Young Univ./Kalei Atagi MO Southern State Univ./Maurice Pearl	MU/Steven Shrout
<i>FOSD Employee Scholarship Fund</i>	<i>250.00</i>
Blue River Comm. College/Jason Ackley	
<i>Louann Dickmeyer Educational Scholarship</i>	<i>250.00</i>
UCM/Eric Bruns	
<i>Jimmy Golden Memorial Softball Scholarship</i>	<i>500.00</i>
Cornell College/Christal Harris	

# RESTRICTED GRANTS

## Field of Interest/Scholarship Funds (*continued*)

*Grain Valley School District Foundation* *27,300.00*

*School District of Independence Foundation:*

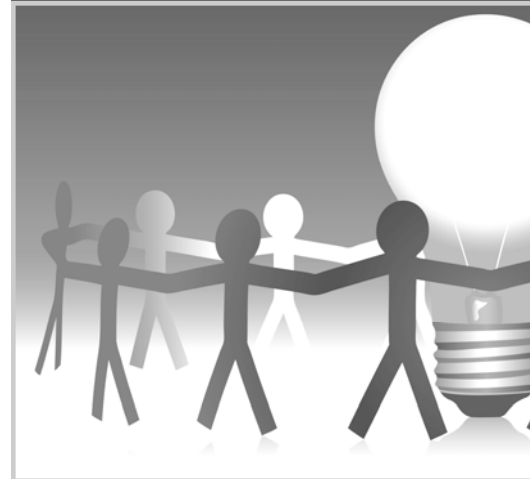
Glendale School Scholarship Fund	4,279.00
Indep. Council of PTAs Mary Elizabeth Leanard Scholarship Fund	7,808.91
Le Roy Brown Scholarship Fund	491.00
Independence School District Major Saver Card Scholarship	1,000.00
Independence School District Southern Stars Fund	1,155.00
Dr. H. Roger Yarrington Rotary Scholarship	567.00
Heart of America Food Service Scholarship	350.00
Robert Henley Scholarship	200.00
L.I.N.K. Scholarship Fund	2,921.07
Gwen & Ray Bolger- "The Scarecrow of OZ" Scholarship Fund	179.50
Jack R. Scharig Memorial Athletic Scholarship Fund	375.00
Matilda Brown Scholarship Fund	100.00
Marvin Lindmark Scholarship Fund	200.00
Procter School Scholarship Fund	1,500.00
WCHS Electronics Scholarship Fund	470.00
Watt Drug Science Scholarship Fund	750.00
Lois Bridges Scholarship Fund	1,000.00
Edmond Davidson Scholarship	600.00
Merideth Francis Scholarship Fund	150.00
John H. Lund Business Scholarship Fund	750.00
Elizabeth Collings Weekley Scholarship Fund	750.00
Eric Austin Scholarship Fund	750.00
Charley Cornell Memorial Scholarship Fund	1,558.09
Sue Gentry Scholarship Fund	900.00
Independence School District - Al Van Iten Scholarship Fund	400.00
Ron and Becky Eiman WCHS Class of '52 Scholarship Fund	450.00
Travis Hopkins Memorial Scholarship Fund	200.00
Phil Turner Instrumental/Music Award Scholarship Fund	750.00
DAR Scholarship Fund	768.00
Young Matrons Scholarship Fund	500.00
Amelia Cairns Scholarship Fund	1,200.00
Michael Brown Memorial Scholarship	3,756.00
Lucy Whitney Kerr Fund	361.00
Dona McLean Science Scholarship Fund	300.00
Plugger Award-Drumm Institute/Indep. Academy	500.00
John W. Luff Elementary Scholarship	817.20
George & Frances Berkemeier Fund	2,250.00
Rosemary Boetjer Scholarship Fund	321.00
Ron Clemons Scholarship Fund	525.00
Phillip A. Parrino Scholarship Fund	250.00
Youth Friends Scholarship Fund	134.00
Independence Rotary Club West Fund	1,500.00
Truman Chapter National Honor Society Fund	500.00
Margaret Meredith Memorial Fund	9,000.00
Association of Chrisman Excellence (A.C.E.)	250.00
Jerry Fisher Scholarship Fund	3,000.00
Janet R. Coldwell Fund	250.00
Patty Schumacher Educational Fund	702.00
Tom Martin Memorial Fund	1,255.00
William Chrisman Plugger Award	500.00

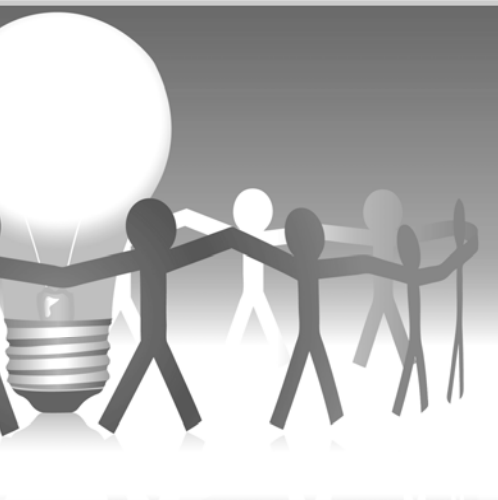
*Jason Stone Creativity Scholarship Award* *1,000.00*

Avila Univ./Hillary Kerschbaum *renewal*

*Junior Service League Bess Wallace Truman Scholarship* *6,000.00*

Loyola Univ. of Chicago/Lauren Knoth	Murray State/Ashley Denise Evans
MO Western/Kendra Sue Myers	UMKC/Kara Miller
MO Western/Kendra Sue Myers <i>renewal</i>	





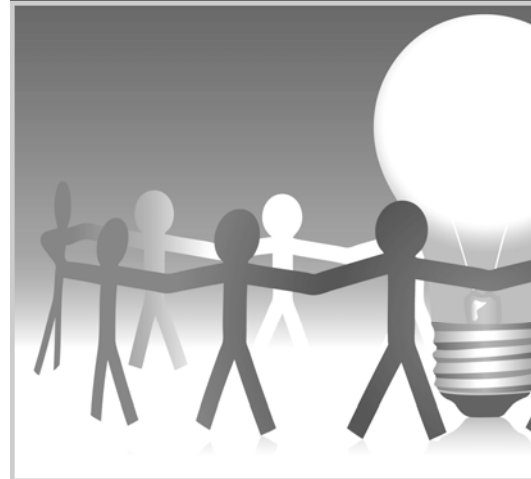
## RESTRICTED GRANTS Field of Interest/Scholarship Funds (*continued*)

<i>Kobe Scholarship Fund</i>	<i>500.00</i>
St Mary's Diocesan High School/Elizabeth Polina	
<i>Forrest and Marjorie Martin Scholarship</i>	<i>16,000.00</i>
The Juilliard School/R. Barron Weir MU/Mary Ellen Josten UCM/Matthew Hughey Univ. of Nebraska Medical Center/Emily Jane Raveill	St. Paul School of Theology/Lia McIntosh UMKC/Cameron Dowlatshahi Murray State Univ./Ashley Denise Evans MU/Andrew Kelley
<i>Independence Young Matrons Scholarship</i>	<i>600.00</i>
Blue River Comm. College/Brenda White	
<i>Betty McMillin Scholarship Fund</i>	<i>5,000.00</i>
MSU/Derek McMillin MO S&T/Antonia DiNapoli Univ. of Tulsa/Stephanie Sudley <i>renewal</i>	UCM/Trisha Jenkins MU/Steven Shrout
<i>Metro Medical Alliance Society of GKC Scholarship</i>	<i>2,000.00</i>
UMKC/Kara Miller William Jewell/Sarah Jane Barlow	
<i>Stella and William Moran Memorial Scholarship Fund</i>	<i>700.00</i>
Blue River Comm. College/ Alisha Anne Kliefoth	
<i>Edward L. and Helen L. Newlin Scholarshi</i>	<i>3,000.00</i>
MU/Kyle Riggs Northwest MSU/Stephanie Eiken	William Jewell/Cole Wrisinger <i>renewal</i>
<i>Georgia B. Northway Hemophilia Scholarship</i>	<i>15,919.50</i>
Bethel Univ./Kate O'Brien Coffeyville Community College/Colton Branch Emporia State Univ./Emily Huston MCC/Katelyn Swanson	KU/Lee Vaughan Ridenhour Univ. of Sioux Falls/Beth Saulsberry Wichita Sate Univ./Cody Patterson Wichita State Univ./Aimee Tempera-Parks
<i>Oak Park Family and Consumer Science Scholarship Fund</i>	<i>700.00</i>
MU/Anna Gudmundsson UCM/Marisa Danielle Vaughan	
<i>GKCFriends of Family &amp; Consumer Science Scholarship</i>	<i>3,000.00</i>
KSU/Rebecca Zirger KSU/Jamie Bauerle	Pittsburg State Univ./Samantha Horner
<i>Olson Student Assistance Scholarship</i>	<i>2,000.00</i>
Concordia Univ. Wisconsin/Megan Hinck Concordia Univ. Wisconsin/Crystal Kirchoff	Concordia Univ. Wisconsin/Megan Krause UCM/Kendall Holsten
<i>PISCES Scholarship Fund</i>	<i>20,000.00</i>
Nativity of Mary Church	
<i>Eugene J. Rolfe Memorial Education Fund</i>	<i>5,000.00</i>
Kettering Univ./Michael Antonocci MU/Sean Collier Univ. of Colorado-Boulder/Craig Pitcher	Univ. of New Orleans/Daniel Givan Univ. of New Orleans/Daniel Givan Washington Univ. in SU/Cameron Hinkel
<i>Senator Ronnie DePasco Scholarship Foundation Fund</i>	<i>4,500.00</i>
Blue River Comm. College/Alisha Anne Kliefoth Blue River Comm. College/Kelly Marie Shaw MO Valley College/Ricardo Almaraz	Rockhurst Univ./Bailey Williams Truman State Univ./Colleen Pace

## RESTRICTED GRANTS

### Field of Interest/Scholarship Funds (*continued*)

<i>Seeger Family Nursing Scholarship Fund</i> Graceland Univ./Kerri Harkness	<i>500.00</i>
<i>Sugar Creek Business and Civic Fund</i> Avila Univ./Erin Mallinson Blue River Comm. College/Aaron Klopfenstine UMKC/Amy Bledsoe	<i>1,610.00</i>
<i>Bill Summa Scholarship Fund</i> KU/Spencer Harris	<i>500.00</i>
<i>Tile Contractors' Asso. of America, Inc.</i> MSU/Lindsey Boville Univ. of Notre Dame/Elijah Pearce Univ. of Texas/John Paul Rysavy	<i>6,000.00</i>
<i>Truman Scholarship Fund</i> Independence School District/Sandy Fetters	<i>500.00</i>





# Truman Heartland COMMUNITY FOUNDATION

**Private Giving—Public Good**

## Board of Directors:

Allen L. Lefko, *Chairman* \*\*

Roberta Coker, *Vice Chairman*

Steven W. Gildehaus, *Secretary*

Nancy C. Kimak, *Treasurer*

R. James Stilley, Jr., *Immediate Past Chairman*

Ron Bruch \*\*

Martha Cockerell \*\*

Bradley A. Constance

Vicki Digby

William C. Esry

Randall Ferguson \*\*

Chuck Foudree

Dr. Frederick Hahn

Doug Hammer

Robert Hepting

Joy Hobick

Richard Kreher

Tom Lovell

Judy Ness \*\*

James P. Pryde \*\*

Frederick R. Siems, Jr.

Dr. Steven Silverstein

Brenda West

Malcolm Wilson

Rev. Sherri Wood-Powe \*\*

\*\* *denotes 2008 Grants Committee*

## Administration:

Paul M. Thomson, Ph.D., *President and CEO*

Beverly J. Powell, CPA, *Chief Financial Officer*

Elizabeth A. McClure, *Director of Programs & Donor Services*

Nicole Stevens, *Director of Marketing & Communications*

Nancy Wilhelm, *Office Manager*

(816) 836-8189 Phone

(816) 836-8898 Fax

[www.thcf.org](http://www.thcf.org)